

# Ruxley Church

Ruxley Methodist † St Francis of Assisi, Ewell



## Church Profile and Statement of Needs

[www.ruxley-church.org.uk](http://www.ruxley-church.org.uk)

An inclusive worshipping community, united in Christ, serving others

# Contents



<b>Welcome from Bishop Andrew .....</b>	<b>3</b>
<b>Welcome from the Archdeacon .....</b>	<b>4</b>
<b>Epsom Deanery An overview by the Area Dean .....</b>	<b>5</b>
<b>A true ecumenical partnership.....</b>	<b>6</b>
<b>Welcome from the Leadership Team .....</b>	<b>6</b>
<b>Come and join us .....</b>	<b>7</b>
<b>Safeguarding.....</b>	<b>8</b>
<b>Location.....</b>	<b>9</b>
<b>Our Core Priorities .....</b>	<b>10</b>
<b>Developing the Spiritual Life of the church family .....</b>	<b>11</b>
<b>Engaging with Children 0-11 and their families .....</b>	<b>14</b>
<b>Building Relationships with the Local Community.....</b>	<b>16</b>
<b>One church family.....</b>	<b>18</b>
<b>Appendix 1 Governance and Finance .....</b>	<b>22</b>
<b>Appendix 2 - Vicarage floor plans .....</b>	<b>25</b>

# Welcome from Bishop Andrew



The Diocese of Guildford is a warm and friendly place to be, with a strong cohort of gifted and passionate laity and clergy, some excellent church schools, and plenty of beautiful countryside to enjoy on a day off!

Our vision as a diocese is to see lives and communities transformed through the love of Christ; and, to that end, we have recently refreshed our [Diocesan Strategy Transforming Church, Transforming Lives](#), with a particular focus on Growing Disciples, Growing Diversity and Growing Community. Although our congregations are generally rather larger than average, we are all too conscious that we are only reaching a tiny proportion of our parish populations, and are particularly keen to become more effective in passing on the baton of faith to younger generations.

Our team of Mission Enablers are committed to working with every parish in fleshing out that vision in an appropriate way, going with the grain of the church's history and tradition, whilst also suggesting new ways to 'proclaim the gospel afresh in each generation'. The pandemic, while presenting many challenges, has helped to forge new relationships between many of our churches, creating a spirit of 'us and us' more than 'them and us', and opening up new approaches to partnership and inter-church collaboration.

If you share our vision for transformation, and have a track record in growing disciples, growing diversity and growing community, we'd love to hear from you!



*Rt Revd Andrew Watson  
Bishop of Guildford*

# Welcome from the Archdeacon



There is so much to rejoice over in the Local Ecumenical Project that makes up Ruxley Church with a wonderfully diverse congregation that is committed to demonstrating the love of Christ throughout their local community. Some of the recent celebrations include: a renewed relationship and focus of ministry at Riverview School, the Together@10 inter-generational worship, a growth in number and depth of discipleship of the young people, 14 candidates recently confirmed and other steady signs of growth.

I sense that there is very real potential for the new House for Duty Incumbent to build on the strengths of relationship that the church community has with its local community. It is vital that the person appointed has experience of and is committed to working with a church school and is eager to develop ministry to young people and families more widely. The successful candidate should have a strong pastoral heart, be committed to working collaboratively with the Methodist Minister and Leadership Team in providing clear leadership in areas which include: dealing with difference, empowering a team ethos, and envisioning others.

This appointment is perfect timing for receiving resource and support from the wider diocese. 2021 marked the launch of our new Parish Needs Process. This marks a brand-new way of working whereby the diocese will seek to walk alongside each parish to help them with vision and whatever needs they might have arising out of this.

I am very enthusiastic about the opportunity that this post offers to build on the excellent work of the previous House for Duty Incumbent. For the person that God calls, there is so much to offer here: the warmth of a great church family and wider community; the opportunity of sharing in leadership in a parish, deanery and diocese which offers considerable support and resources; the exciting challenge of discerning with this community what God is doing and how we might join in; and the privilege of living and working in this part of the country with so many opportunities for clergy and families.

If you'd value an informal conversation about this post, please do not hesitate to be in touch with me at [archdeacon.dorking@cofeguildford.org.uk](mailto:archdeacon.dorking@cofeguildford.org.uk), so that we can arrange a time for us to speak.

*Venerable Martin Breadmore*  
*Archdeacon of Dorking & Acting Archdeacon of Surrey*

# Epsom Deanery

## An overview by the Area Dean

Epsom Deanery is fantastic, but I'm biased!

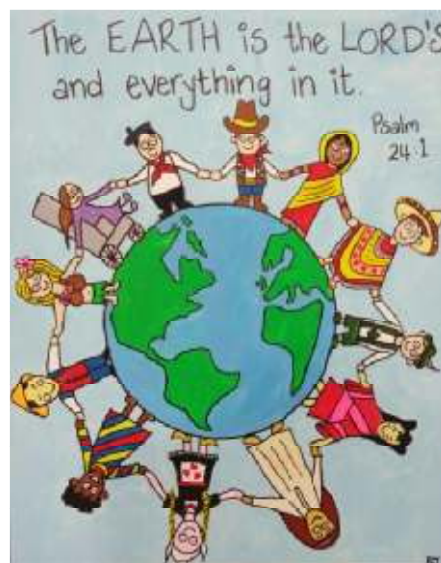
Seriously there is good fellowship and cooperation across our 13 benefices, demonstrated by increased engagement at both the Incumbents and full Chapter meetings as well as Synod.

We try to ensure that the purpose of each meeting is clear and identify current relevant topics that are important for everyone. We have recently gone through the Parish Needs Process, an initiative to ensure each benefice develops a comprehensive Church Development Plan. This has enabled us to identify synergies between us and opportunities for even more collaborative working.

Mentoring is offered to new clergy, and we operate several clusters for deeper fellowship and mutual support. There is an annual Incumbents retreat for 24hours as well as a Quiet Day for all the Chapter. We are concerned for one another's wellbeing believing that you cannot nurture others unless you nurture yourself. We would be delighted to welcome a new colleague and look forward to sharing ministry with you.



*Revd. Rosemary Donovan*



## A true ecumenical partnership



The new incumbent will work in partnership alongside Rev. Emma Cusack. Emma has been Methodist Minister at Ruxley since 2016, beginning her presbyteral journey in 2003. She has been a Circuit local preachers' tutor since 2007, as well as a Mentor to Probationer Ministers over the last thirteen years, supervising candidates exploring a vocation to ordained ministry. Emma is a passionate preacher, loves singing and has our members' pastoral care at heart. Emma shares her full-time ministry between Ruxley and neighbouring Stoneleigh Methodist Church.

## Welcome from the Leadership Team

Ruxley Church is an inclusive, worshipping community, united in Christ and serving others. It is a true ecumenical partnership. With God at the centre of our ministry we are a welcoming, friendly family, who spreads the love of Jesus by:

- celebrating in worship
- enabling people to explore and develop their faith
- ministering to children and young people, both within the church setting and in partnership with the local church school
- providing a variety of community activities which enable people to connect with us in different ways.

We continue to be excited about all that God has done over the years and is continuing to do here. As you read through this profile, we hope that you will share the excitement of all that God is calling us to do. We are seeking a truly collaborative individual who is committed to working as part of an ecumenical team, and willing to work in equal partnership with the Methodist Minister, Leadership Team and wider church family as we strive to continue to be an inclusive worshipping community, united in Christ and serving others.



Rev. Emma  
Minister

Julia  
Steward

Sue  
Senior Steward

Paulette  
Churchwarden

**An inclusive worshipping community, united in Christ, serving others**

# Come and join us

**We are seeking a person of prayer, guided by God in all things, who**

- is confident in being a teacher and shepherd
- has a pastoral heart
- is able to engage people and nurture discipleship
- has capacity for vision and initiative and is able to work flexibly
- has a sense of humour

**and is able to**

- work collaboratively
- motivate and encourage others and build positive relationships
- demonstrate good leadership skills
- organise self and others



**An inclusive worshipping community, united in Christ, serving others**

This is a two days per week plus Sunday, **House for Duty** position to be the Anglican Incumbent at Ruxley Church, working in partnership with the Methodist Minister, who is full-time across two Methodist churches.

We are a diverse community, seeking someone who

- will be comfortable working across all ages, genders and ethnicities, helping us to identify strengths and talents to be used for the glory of God
- has a truly ecumenical mindset who will promote our ecumenical ethos
- is willing and able to work in partnership with the Leadership Team
- in partnership with the Methodist Minister will provide pastoral care across the whole church family
- will enrich our spirituality and develop our prayer life, individually and as a church, and is willing to be flexible in their approach to worship
- together with the Methodist Minister will encourage and inspire us to live out our core priorities with an emphasis on
  - developing our relationships with and ministry to young people and their families, including our Fish Club and Catalyst groups (ages 2-20)
  - continuing to develop our relationship with Riverview CofE Primary and Nursery School, as well as Toddler Group and Pre-school Group
  - building on our outreach to hirers of the premises and wider community
- brings energy and enthusiasm to the role.

## Safeguarding

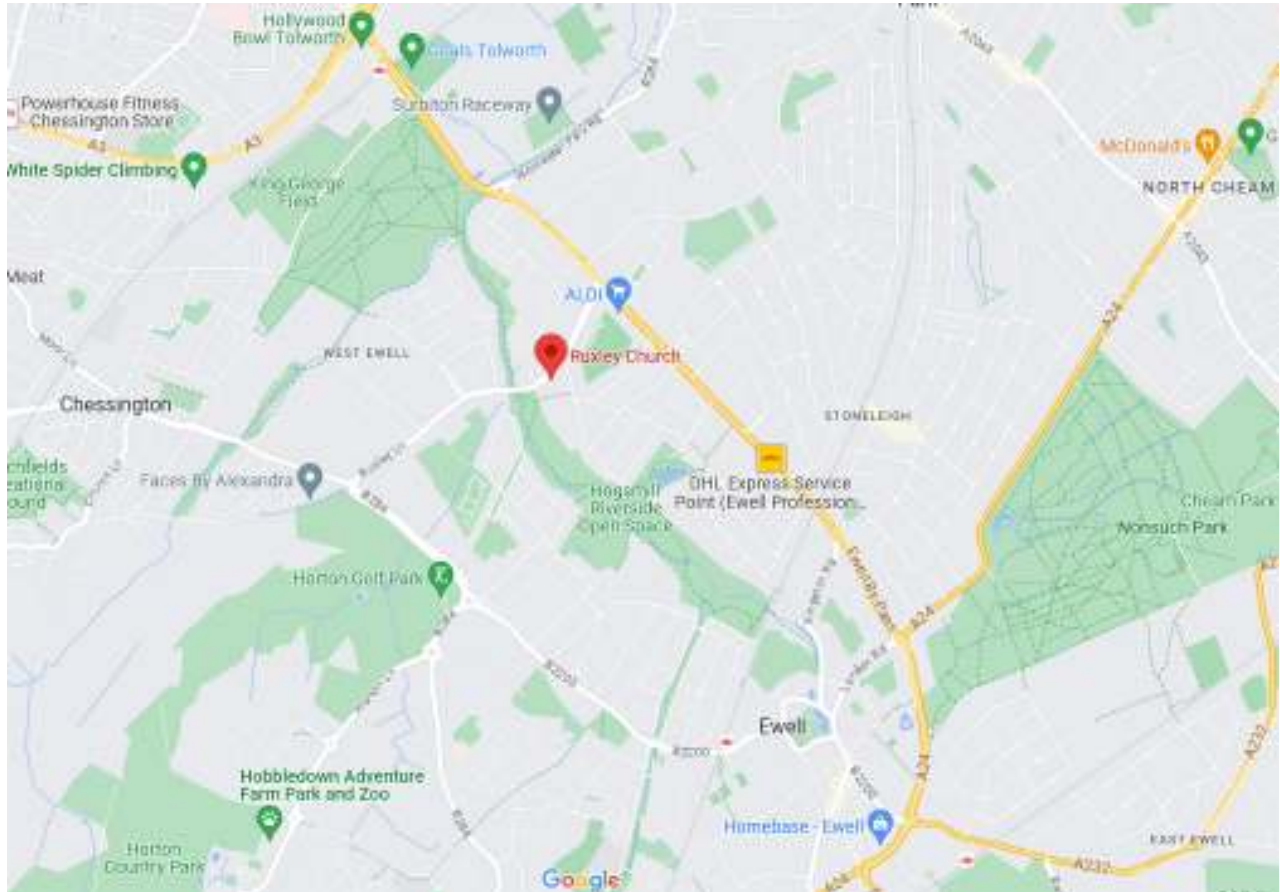
All are welcome here. Ruxley adheres to Diocesan Safeguarding Policy and our Safeguarding Team of three ensure that everyone at Ruxley is committed to promoting a safe and supportive environment for all.





# Location

West Ewell is within the M25 at the north-eastern edge of Surrey, 17 miles from the centre of London. We are in Epsom Deanery in the Diocese of Guildford and one of five churches forming the Methodist Wimbledon Circuit in the London District.



The area is socially and economically diverse, with pockets of affluence interspersed with areas of social housing. The population of 8,600\* is continuing to grow, with significant building activity going on in the local area. The majority of properties are owner-occupied. 14% are social rented\*.

We benefit from areas of countryside and open space nearby but the largely urban nature of the area, together with its lack of a central hub, makes it challenging in terms of community identity.

There are three schools in the parish, one of which has close links with Ruxley. A number of small local shops serve the area. There is a large Sainsbury's on the outskirts of Epsom Town Centre, about 4 miles away and more extensive shopping centres further afield. There is a variety of restaurants and coffee shops in and around the area as well as doctor and dental surgeries.

\*2011 figures taken from *Parish Spotlights*

# Our Core Priorities

Back in 2018 we gathered for a Vision Day with the primary aim of seeking to discern God's will for our church. As a whole church family, we started to identify areas that God was prompting us to develop, as well as celebrating what we do well. This was followed up with a session in 2019 facilitated by the Diocesan Mission Advisor.

During the Covid pandemic the Leadership team spent time reflecting and praying about all the information we had gathered and set about developing a Mission Action Plan under the Four headings of our vision and mission statement

- a. Celebrating in worship
- b. Ministering to the community
- c. Sharing in witness and loving service
- d. Developing our spiritual life as individuals and as a church

As our discussions continued, we spent time discussing and discerning what our overall vision might be for the Ruxley community and prayerfully adopted our new Mission Statement:

## **An inclusive worshipping community, united in Christ, serving others**

We then set about prioritising three core areas to focus on and develop. These now form the basis of our Mission Action Plan, and it is good to see that these fit in with the areas identified as a priority for the Diocese of Guildford:



# Developing the Spiritual Life of the church family

## Worship

### *Sundays*

10.00 am Morning Service

6.30 pm Evening Service

### *Tuesdays*

7.45pm Prayer Group

### *Thursdays*

9.30am Zoom Morning Prayer



A significant benefit of being a Local Ecumenical Partnership (LEP) is being able to enjoy a broad spectrum of styles of worship. We readily draw on the resources of either Anglican or Methodist tradition or both, as well as other liturgies such as those from the Iona Community. The main morning service is usually an act of Family Communion. Average Sunday attendance is in the region of 50-60 for the main morning services and around 12 in the evenings although special services attract more, especially at Christmas.

Our informal Together @ 10 service is held once a month along the lines of a Messy Church format, with a short act of worship followed by activities, planned by our Together @ 10 Team.

Evening services tend to be more intimate and informal, encompassing monthly evening communion, meditative services, and corporate bible study.

All are welcome at the Lord's table. Communion is offered in two forms, reflecting our two traditions: a chalice of alcoholic wine, and small glasses of non-alcoholic wine.

Everything and everyone is covered by prayer. The Tuesday Evening Prayer Group meets in the Chapel and there is a very active prayer chain. Thursday Morning Prayer on Zoom has encouraged others to participate who may not otherwise be able to join in person.

All morning services are projected with large-print orders of service available. There is a built-in induction loop for the hearing impaired.

## The Ministry Team

The incumbent and Emma are assisted by six accredited **Leaders of Worship**, three of whom are also accredited **Occasional Preachers**, as well as a team of about 30 volunteers who assist as Team Co-ordinators, Vestry Assistants, Intercessors, Readers, Chalice Assistants, Worship Team Assistants, Welcomers and AV operators on a rota basis.

## Music

We are blessed to have *Emmaus*, an accomplished instrumental group of 9 musicians who accompany the majority of the morning services. They have a large repertoire of hymns and songs and can draw on a range of songs both old and new from Songs of Fellowship, Singing the Faith, Ancient and Modern, Iona Community as well as World Music and material from Lutheran and Catholic traditions.

There is also an informal Ukulele Band that meets weekly.



## Small Groups

Almost half the congregation now meet in twice-monthly groups for Bible study and fellowship. During Lent, all groups are encouraged to use the same material linked in with Sunday preaching themes.



## Together@10

Together @ 10 is our monthly family service where we worship, pray, create, and share fellowship in a relaxed environment, working to provide something for everyone by drawing on a range of Spiritual Styles.



## Confirmation and Occasional Offices

2022-23

Baptisms: 7      Confirmations: 14      Funerals: 6

Baptisms are conducted as part of the morning service using a form of liturgy that has been created to reflect the roots of both denominations. Funeral services are conducted by ministers of either denomination dependent on the choice of the family. We have few requests for weddings, possibly due to the modern style of the building, but there is one in the diary for 2024.

New members are baptised and confirmed into joint denominational membership. We were overjoyed to welcome 14 candidates into membership at an amazing confirmation service in June 2023 officiated by both Bishop Andrew and Rev. Emma Cusack.



# Engaging with Children 0-11 and their families

## Baby and Toddler Group and Pre-school

Two independent groups who love to support us in various events. This is an area of ministry that we are keen to develop, particularly during festival times.

Baby and Toddler Group has been running every Wednesday during term time for the last three years. They provide a safe space for parents / carers and their children from birth to 3 years.

There has been a Pre-school at Ruxley since the Methodist Church first opened in the 1960s. They admit children from two and a half up to school age and their capacity is for 36 children. In 2018 they were judged as 'Outstanding' by OFSTED.

## Fish Club and Catalyst

Our ministry to children, youth and their families has always been a priority. Our groups regularly host up to 19 young people aged from 2 to 20. We have recently linked with the St Paul's Youth Minister through Raising Generations to support us in developing our youth ministry, *Catalyst*. Our hope is that our new incumbent will not only work with our dedicated team of volunteers who run group sessions, but also work directly with our young people.



## Riverview School

There are three schools within the parish boundary, two primary schools and one secondary school. Our closest link is [Riverview \(C of E\) Primary School and Nursery](#) which was rated good in a recent OFSTED inspection. Currently children come to the church for special services such as their Harvest celebration and the end of year service for Gold Class (Year 6 leavers) and to enhance their understanding of notable events in the church year. They also, on occasions, visit groups which meet at Ruxley, such as the Tuesday Friendship Club.



The ECC and Headteacher are keen to develop links between the church and school. The new incumbent would be a member of the Full Governing Body and one of the committees (currently the Resources Committee) alongside the two governors appointed by the ECC. It is hoped that the incumbent would continue the tradition of taking some assemblies as well as liaising with the Headteacher over services at Ruxley so that Riverview's vision, based on John 10:10, is brought to life by living out values of Hope, Trust, Love, Forgiveness and Respect.



Preparing for the Riverview Harvest Service at Ruxley Church

# Building Relationships with the Local Community

## Friendship Club

Tuesday Friendship Club have met fortnightly for many years. They enjoy a varied programme including demonstrations, talks, outings, as well as visits from Riverview School students, and always with a warm welcome and lots of laughter.



## Wednesday Coffee and Chat

This is a recent initiative advertised at our local schools for Wednesdays during term time. We hope this will help strengthen our links with those who are dropping children at school and who have an hour to spare before getting on with the rest of their day.





## Thursday Coffee Morning

This has become an increasingly popular meeting place for around 30 people drawn from the church and local community. It has been a springboard for some to become regular worshippers.



## Community Choir

The group meets most Wednesdays and prepares pieces for special services, such as Easter, Harvest and Christmas. The choir is open to all, whatever their musical ability, and currently comprises about 15 members, many of whom are not regular church members.

## Men's Group

Men's Group meets monthly in a local pub to enjoy a drink and dinner, providing a point (or a pint!) of fellowship for members and non-members alike.

## Garden of Reflection

The final areas of our Memorial Project were dedicated in May 2021 following a whole-community major fund-raising effort in 2018. The Garden provides a beautiful space for anyone to sit and enjoy, with a variety of plants providing all year-round interest. We have three wooden pillars on which memorial plaques are



installed (families contact us and we arrange), and we conduct short open-air dedications when a new plaque is placed there. This facility is available to anyone in the Parish, as well as church members. Other parts of the Project include a Labyrinth for contemplative walking prayer, and the 'Peace Stone'. We have found that the garden is used by many different local people, including children waiting for the bus!

# One church family

## *How did it all start?*

The congregation of St Francis Church and Ruxley Methodist Church were officially united as a single congregation ecumenical partnership in January 2002, although we have shared all our services since August 2000. It had become clear that the Methodist Church building in which we were meeting had come to the end of its life and so we started to look at the possibility of building a new Church Centre. This was completed in 2013 and in the June of that year we moved to our new home.

## *An ecumenical church*

Ruxley Church drew its original membership from both the Anglican and Methodist traditions but now gathers as one worshipping community. The incumbent and Methodist Minister work in partnership to lead worship, discern the direction God is calling us to serve in and provide pastoral care across the whole Ruxley church family. We have 53 members on the Electoral Roll, out of a total of 83 joint church members, plus 19 young people.

We enjoy good relationships with both parent denominational bodies, as a parish church within the archdeaconry of Dorking, and as a member church of the Wimbledon Circuit. Our Methodist Minister shares her ministerial oversight of Ruxley Church with Stoneleigh Methodist Church.

*The Bishop of Guildford and  
Emma, our Methodist Minister  
Ruxley Confirmation Service, June 2023*



There is a precedent for the incumbent to be granted a 'recognised and regarded' status by the Methodist Church. This provides the opportunity to lead worship at one of our sister Methodist churches within the Circuit on an occasional basis.

## Other links

Our church regularly and generously supports **charities** both in the UK and abroad, through donations, social events and coffee mornings. Some of last year's beneficiaries included Christian Aid, Bishop of Guildford's Foundation, Methodist Homes, Children's Society, Action for Children and at Harvest, All We Can.



Ruxley Church is one of the venues for **Good Company (previously known as Foodbank)**. The centre provides much needed food and support for many people in the area. A group of church members work alongside volunteers to provide regular support to this vital enterprise.

Our Methodist Minister Emma has been actively involved in fund-raising to support **Sudbury Primary and Junior High School** in Ghana since 2014. The school has been adopted by Ruxley as the Minister's Charitable Project and funds are raised annually to support them.



A **Saengsu Korean Church** congregation meets at Ruxley on Sunday afternoons for worship and a communal meal. We occasionally share in worship and fun day activities together.

## Church Centre

Our church is one of the newest in the Diocese of Guildford, with a visually-striking tower designed to symbolise Ruxley's vision to be a beacon of God's love to the local community. This purpose-built, two-storey building was dedicated to the glory of God on 25<sup>th</sup> June 2013. All halls and rooms can be easily accessed by wheelchair users, including the upper floor which is served by a lift.



The Worship Hall is on the first floor. It can accommodate 180–200 people, with a separate lobby area which is used for additional seating or separately as a meeting space. The vestry, sacristy, upstairs toilets and a small kitchen are located off this lobby area. The sanctuary is located within the apex of the main space, furnished with a beautifully-crafted altar table, lectern and credence table with two chairs.

The Chapel is located on the ground floor and is a smaller, more intimate area of the church that is used for prayers when the building is open during the week, and particularly on Tuesday evenings. The Church Office is located adjacent to the Chapel off the vestibule at the front of the building. This also provides an outlet for *Good Company* (Foodbank).



Our three halls and coffee lounge are extensively used throughout the week by a range of community groups, including Pre-School. The Main Hall is a multi-purpose and flexible space that can be sub-divided into two, each with its own audio-visual facilities including a hearing loop. The Small Hall has its own child-friendly washing facilities and hearing loop. The Meeting Room is the smallest of the three spaces, providing facilities for smaller classes and activities.



## Minister's Residence

Built in 2008 to 'green book' specification as the first phase of the church redevelopment, this spacious, four-bedroomed detached house has an integral garage and gardens to side and rear. The kitchen and bathrooms were completely refurbished in 2021.

The house is situated in Ruxley Lane, at the junction with Scotts Farm Road, on the site of the original Ruxley Methodist Church. The Church Centre is three minutes' walk away and Riverview School another four minutes beyond. The property will be inspected and any necessary repairs and redecoration undertaken.



## Church Administrator



Jenny Meineck has been employed as Church Administrator since April 2021, forming a vital link between visitors, church members and hirers of the premises. She is a long-standing member of the church family and is convenor of the Premises Team.

# Appendix 1 Governance and Finance

## Finance

Resources were combined in 2004 to form a single set of unified church accounts. A rolling five-year forecast is prepared to assist in planning and improving our general finances. A collection is taken at the main service each Sunday and a plate for gifts is available at the back of the church at all services. Members are encouraged to join the planned giving scheme to donate by weekly envelope or standing order and to Gift Aid the money where possible.

As established by our constitution as an LEP, we undertake to meet the ministry needs of the combined congregation by paying parish share and contribution to Methodist assessment.

Ruxley employs a Church Administrator and a premises cleaner.

## Treasurers Report to the 2023 Annual Meeting

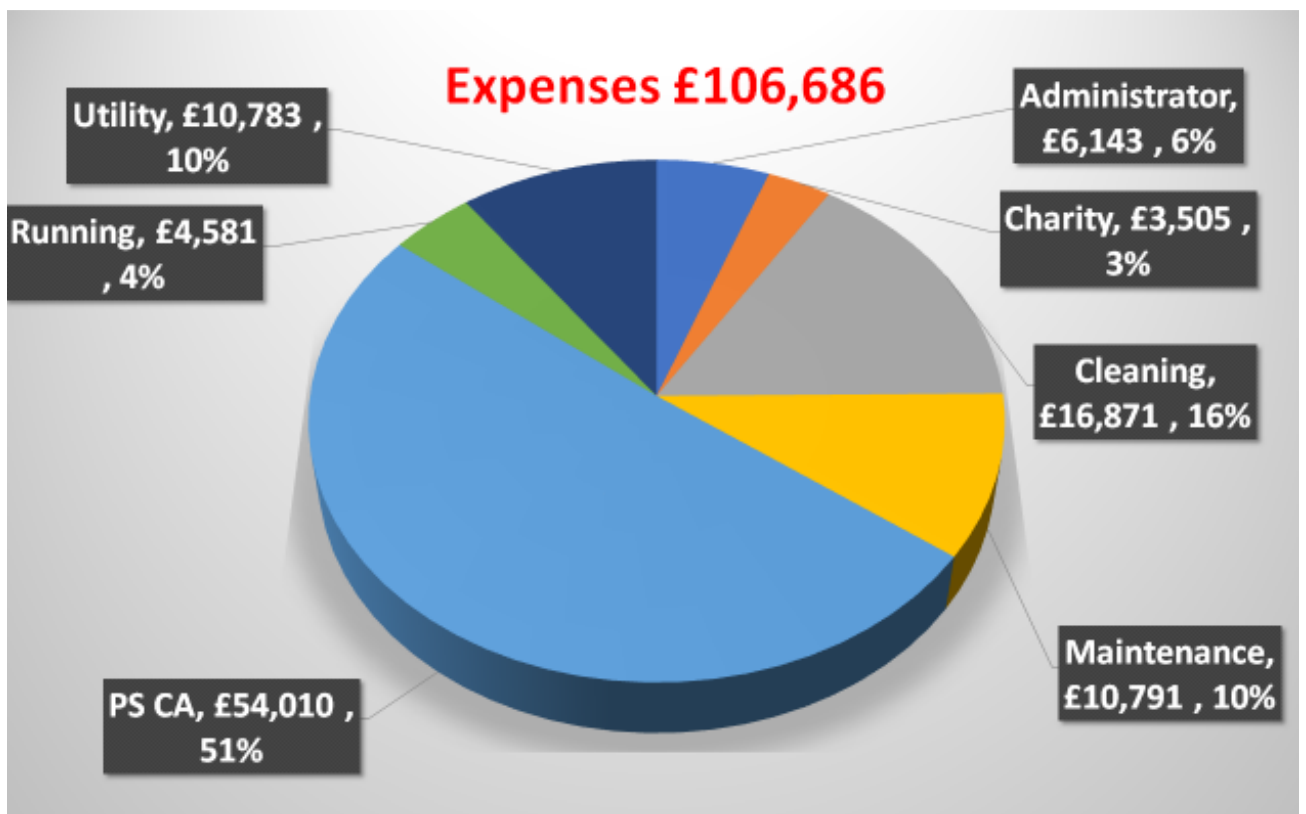
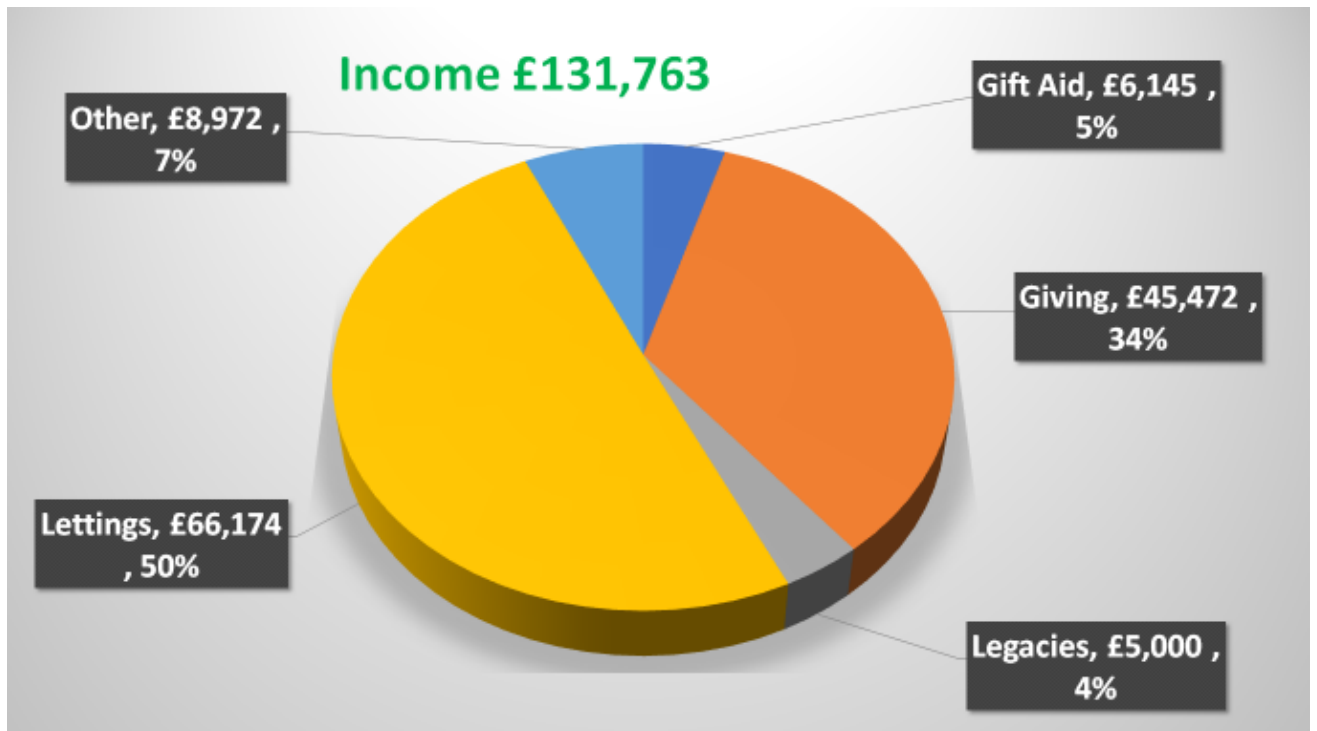
### *Surplus £25,077*

- £6,000 from insurance company for replacement windows
- £2,500 bill for heating maintenance
- £16,500
- Overall giving to the church has gone up 4%

### *Financial heads-up*

- Electricity costs have gone up 100% to about £7,000
- Our current gas costs are £3,000 having been fixed before energy crisis. We anticipate that the next bill due for renewal in Jan 2024 will go up 5 times as much to £15,000.
- New thermostats have been installed through out the building saving about 13% in gas usage compared with last year.
- Redecoration of downstairs halls, etc.

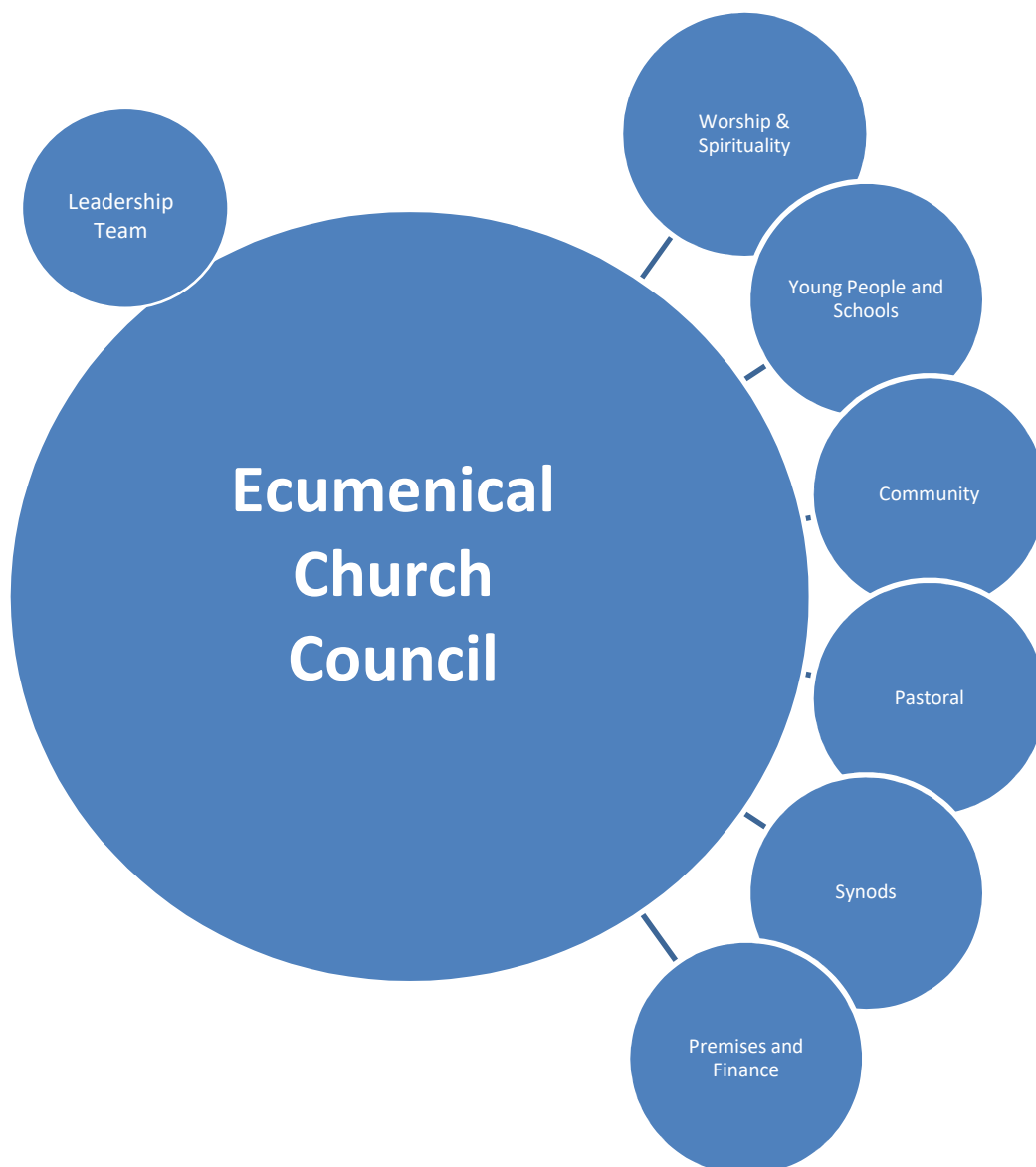
## 2023 Annual Meeting Financial Summary



## Governance

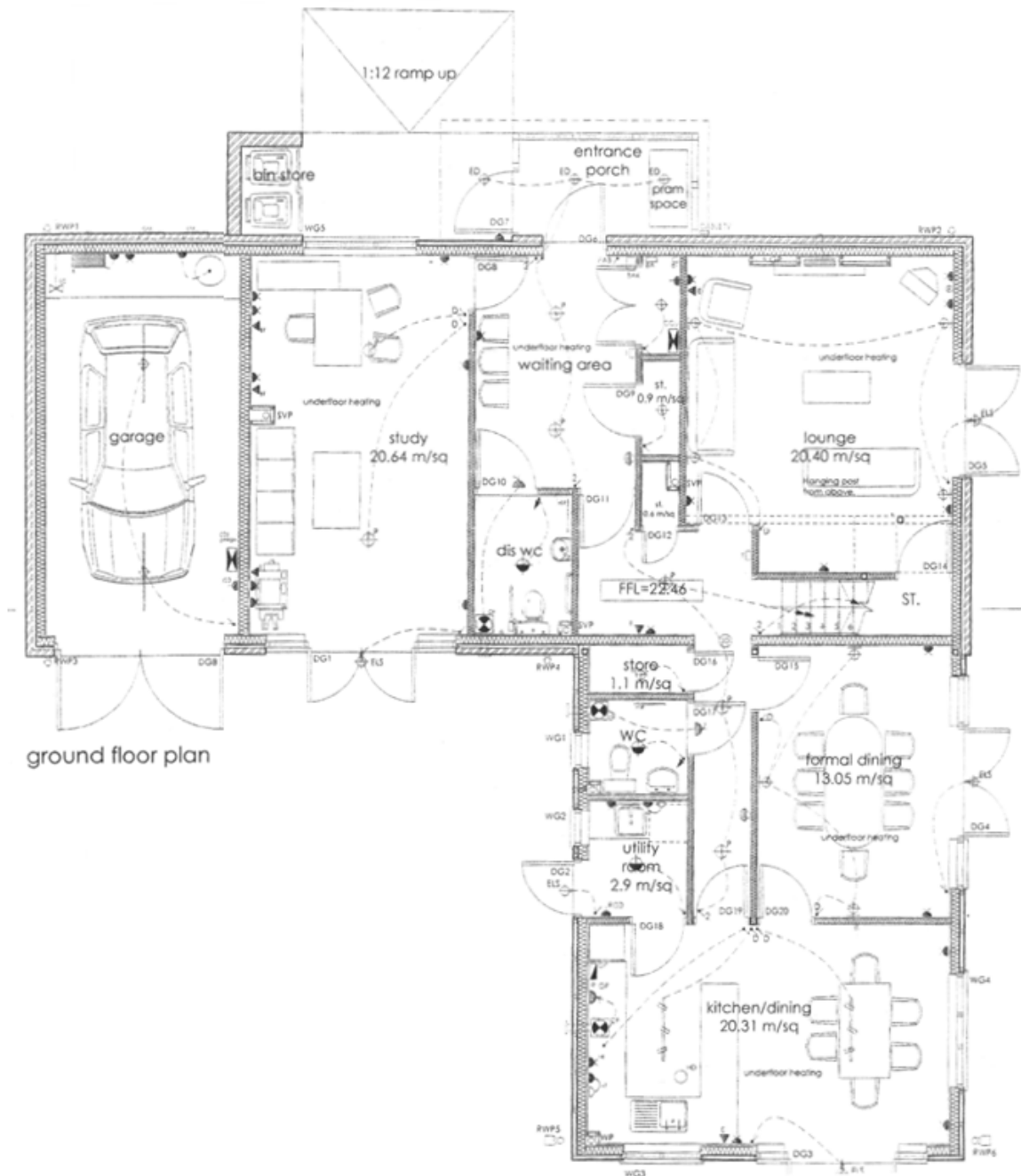
The Ecumenical Church Council (ECC) meets about five times a year with the Leadership Team meeting in the intervening months.

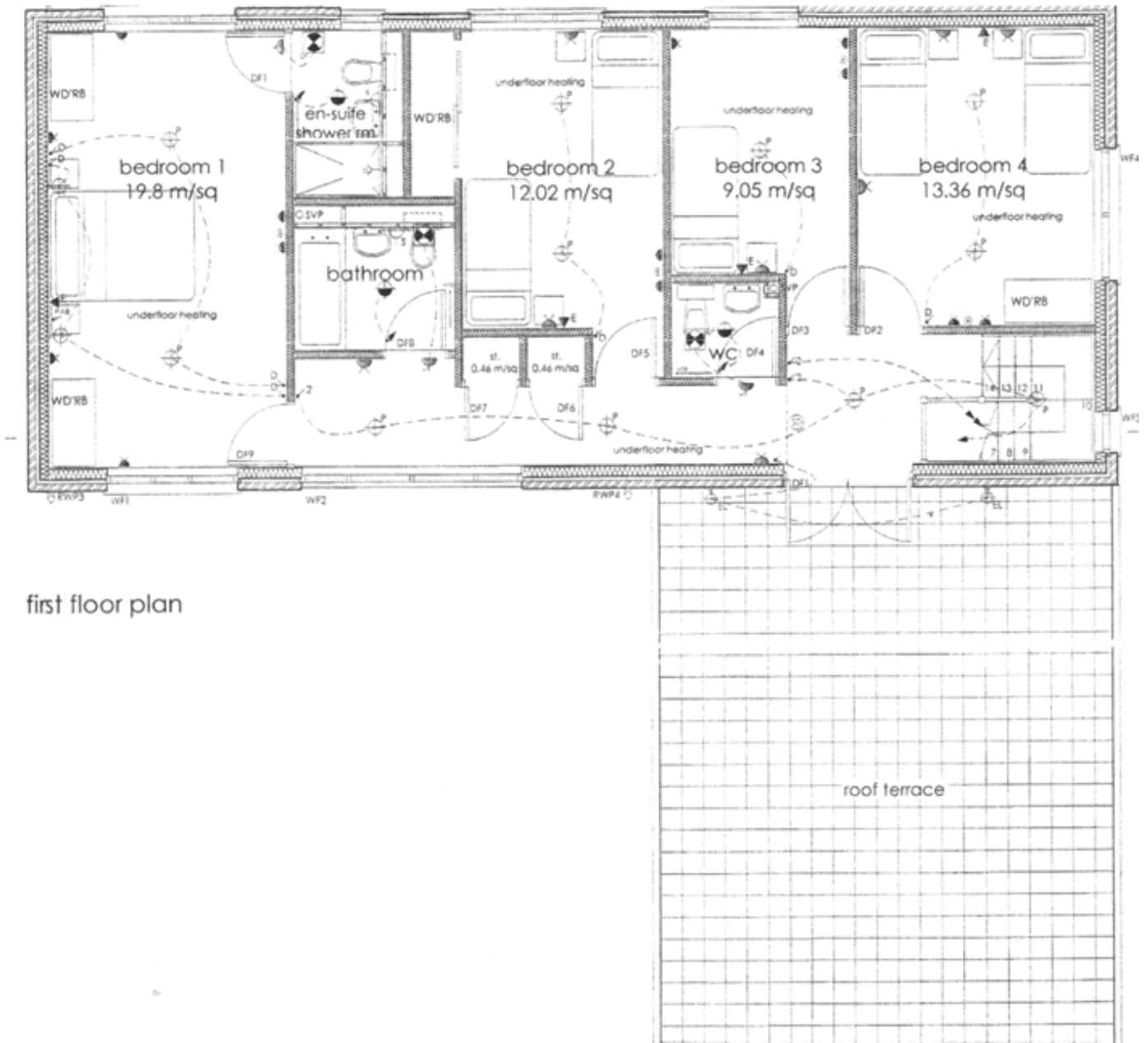
Subgroups meet on a regular basis to discuss various aspects of church life and their facilitators feed back to the ECC.





# Appendix 2 - Vicarage floor plans





first floor plan

# Ruxley Church

## Ruxley Lane, Ewell

### KT19 0AF

*Methodist Minister:* Rev. Emma Cusack  
[methodist.minister@ruxley-church.org.uk](mailto:methodist.minister@ruxley-church.org.uk)

*Churchwarden:* Paulette Withycombe  
[church.wardens@ruxley-church.org.uk](mailto:church.wardens@ruxley-church.org.uk)

*Senior Steward:* Sue Grasby  
[steward1@ruxley-church.org.uk](mailto:steward1@ruxley-church.org.uk)

*Church Administrator:* Jenny Meineck  
020 8394 1081 [office@ruxley-church.org.uk](mailto:office@ruxley-church.org.uk)

*Safeguarding Officer:* Judy Quaife  
[safeguarding@ruxley-church.org.uk](mailto:safeguarding@ruxley-church.org.uk)

See our weekly news sheet  
and our church magazine *Ruxley Star*  
or visit our website and Facebook page



[www.ruxley-church.org.uk](http://www.ruxley-church.org.uk)

An inclusive worshipping community, united in Christ, serving others